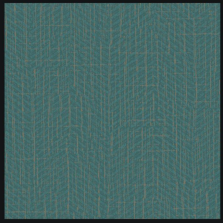


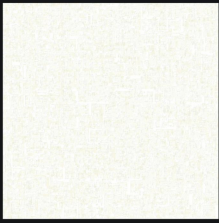
Shine

www.decorapro.mx

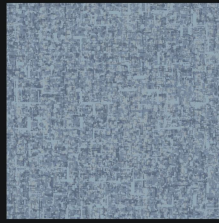




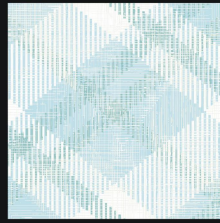
84-0201



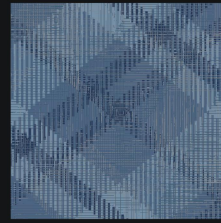
84-0503



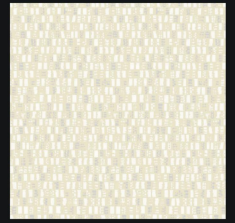
84-0506



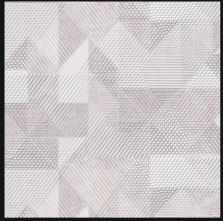
84-1002



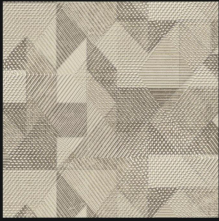
84-1006



92-0201



92-0301



92-0303



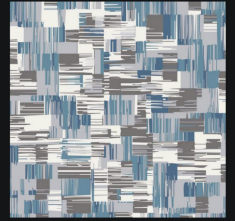
92-0401



92-0402



92-0403



92-0405



92-0701



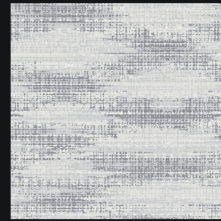
92-0702



92-0706



92-0801



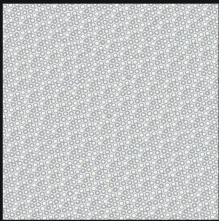
92-0803



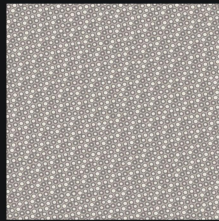
92-0805



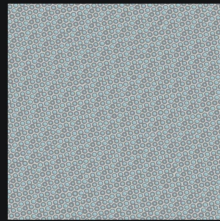
92-0902



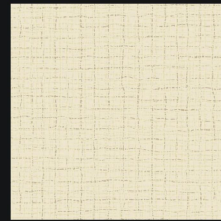
92-0903



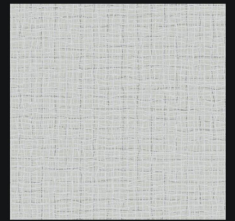
92-0905



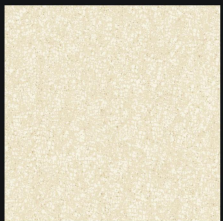
92-0906



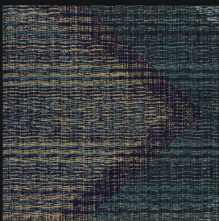
92-1002



92-1006



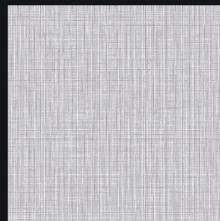
92-1102



92-1603



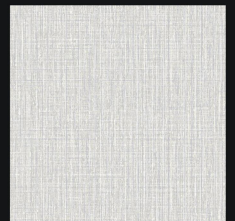
92-1706



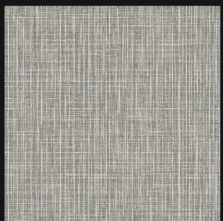
92-2001



92-2002



92-2003



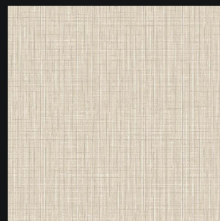
92-2004



92-2005



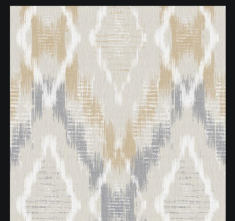
92-2006



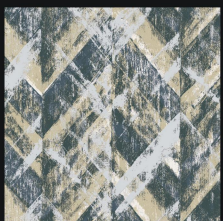
92-2007



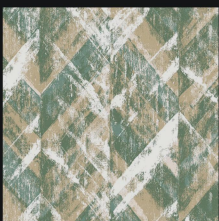
92-2008



92-2205



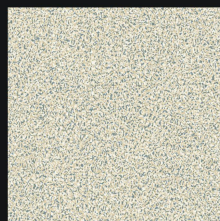
92-2004



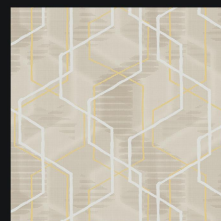
92-2303



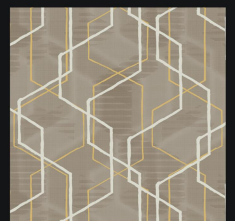
92-2305



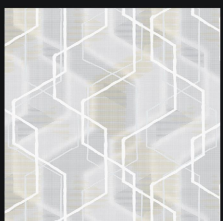
92-2403



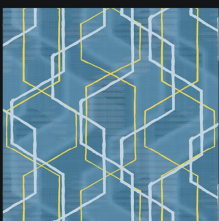
92-2501



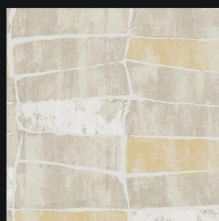
92-2502



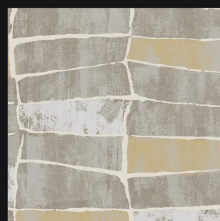
92-2504



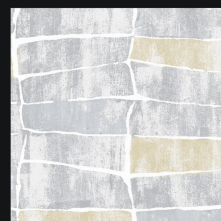
92-2505



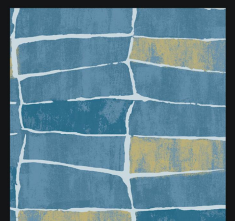
92-2601



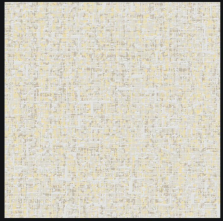
92-2602



92-2604



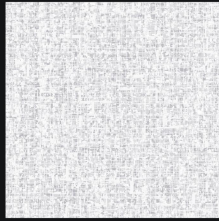
92-2605



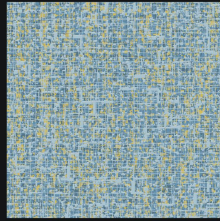
92-2701



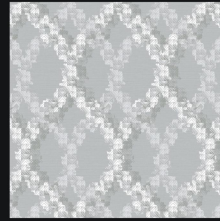
92-2702



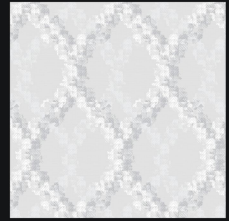
92-2704



92-2705



92-2801



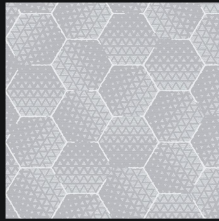
92-2802



92-2804



92-2806



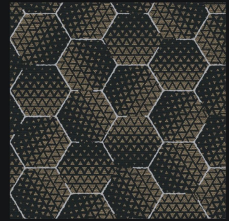
92-2901



92-2902



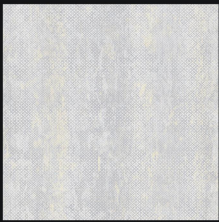
92-2904



92-2906



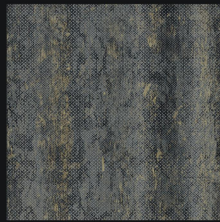
92-3101



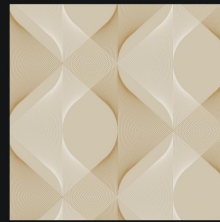
92-2806



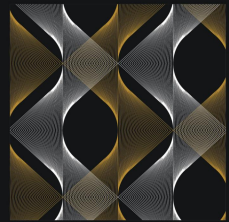
92-3104



92-3106



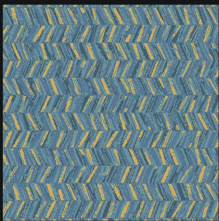
92-3206



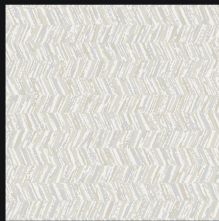
92-3207



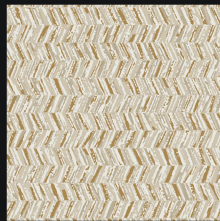
92-3303



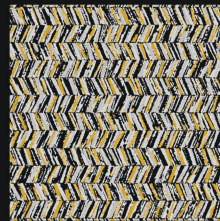
92-3304



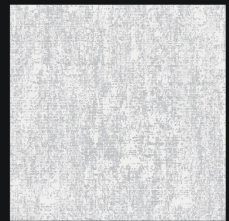
92-3305



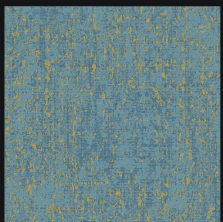
92-3306



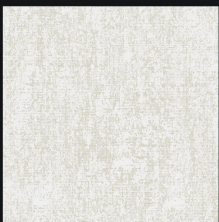
92-3307



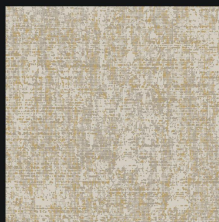
92-3403



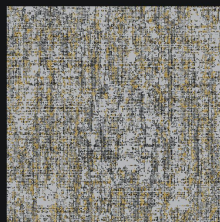
92-3404



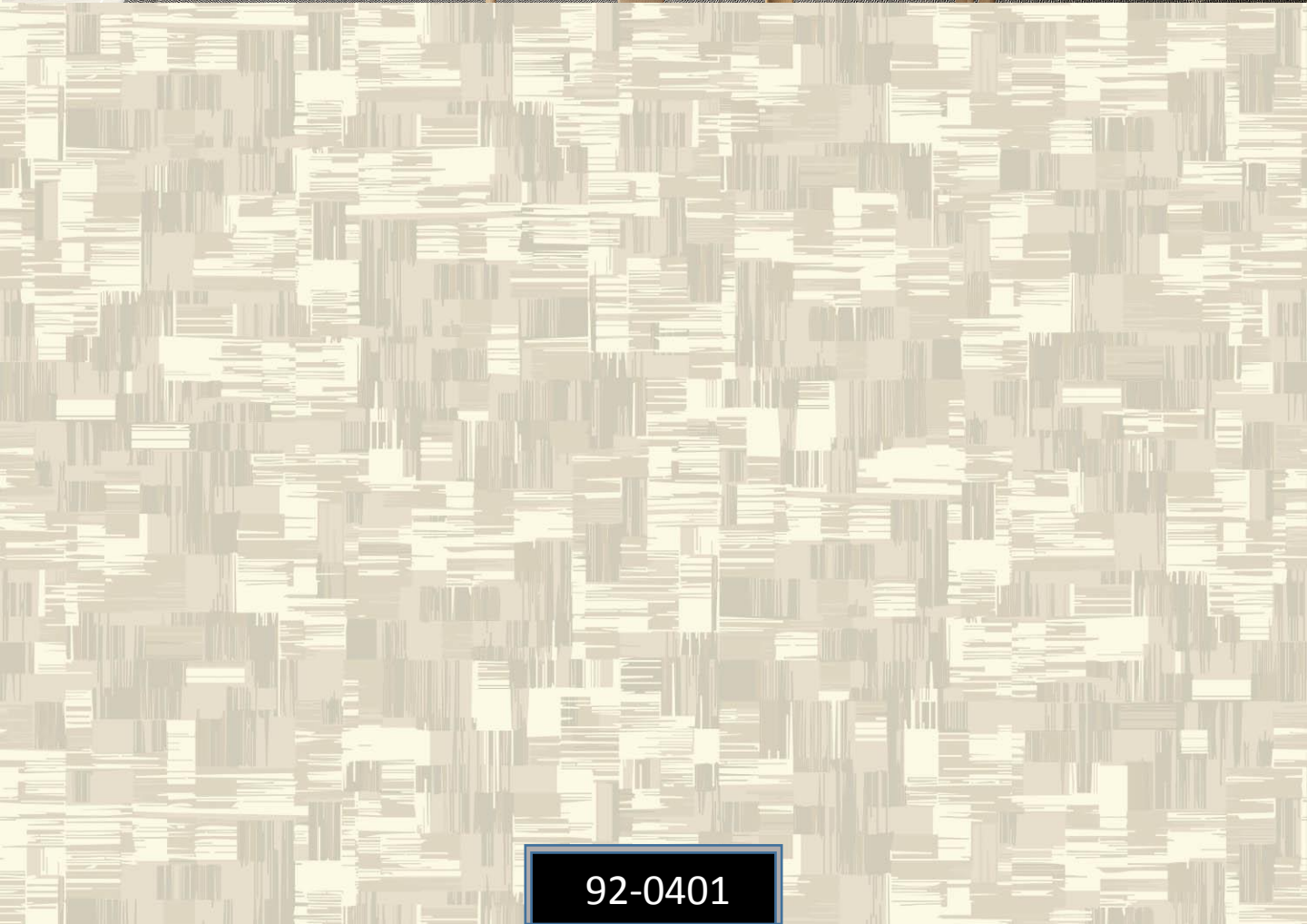
92-3405



92-3406



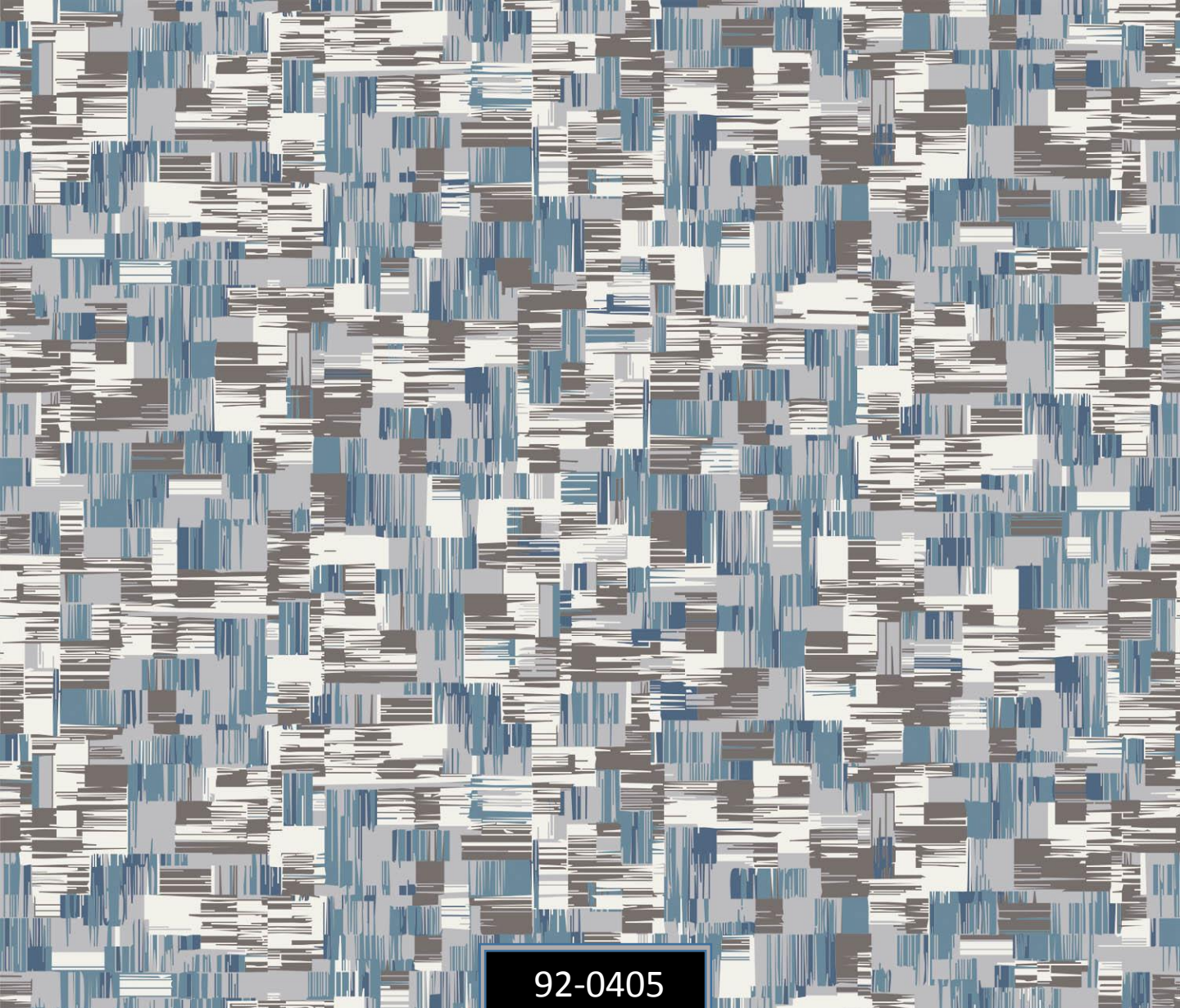
92-3407



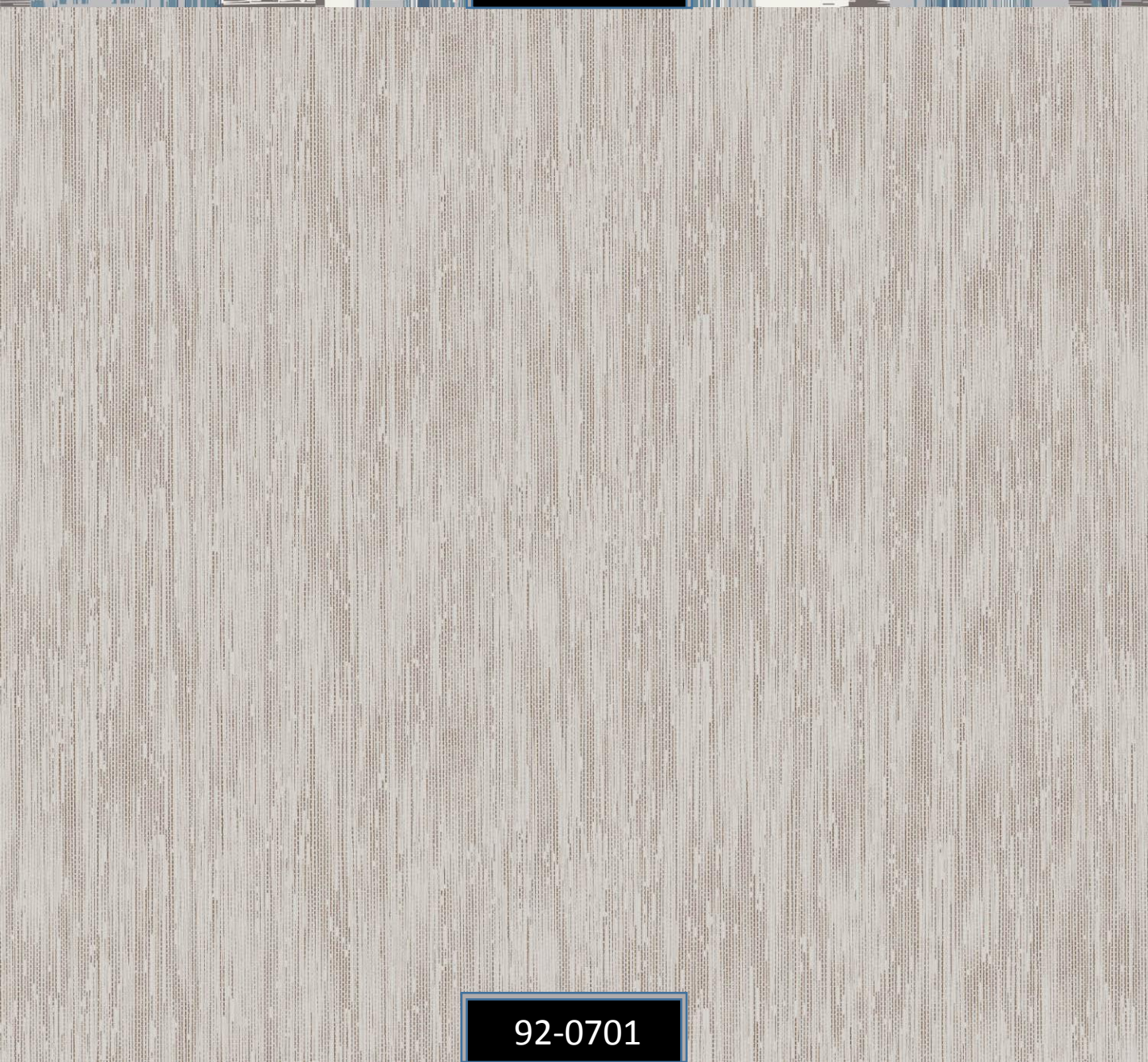
92-0401

92-0402

92-0403



92-0405



92-0701

92-0702

92-0706

92-0801

92-0803

92-0805

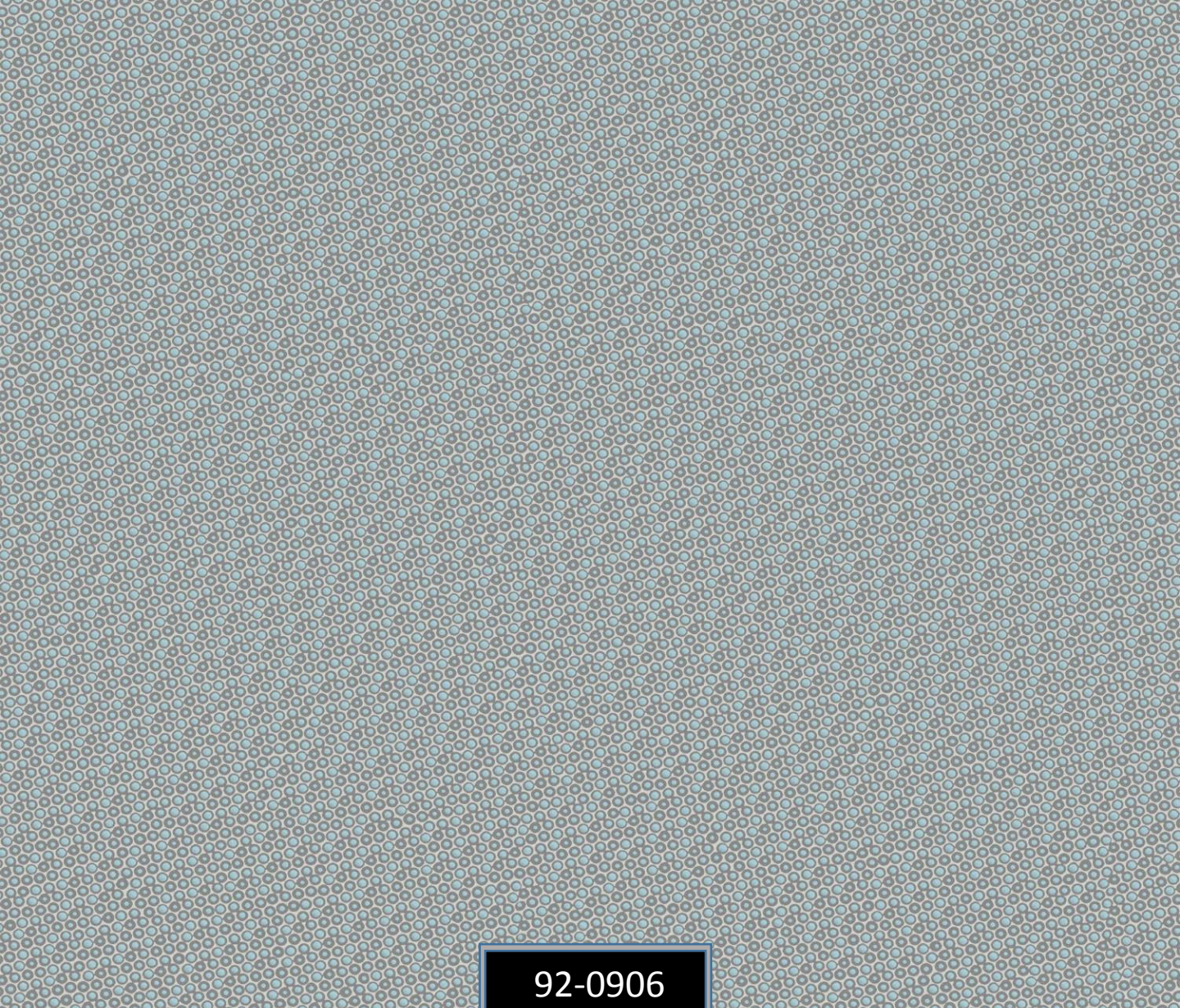


Vertical ART

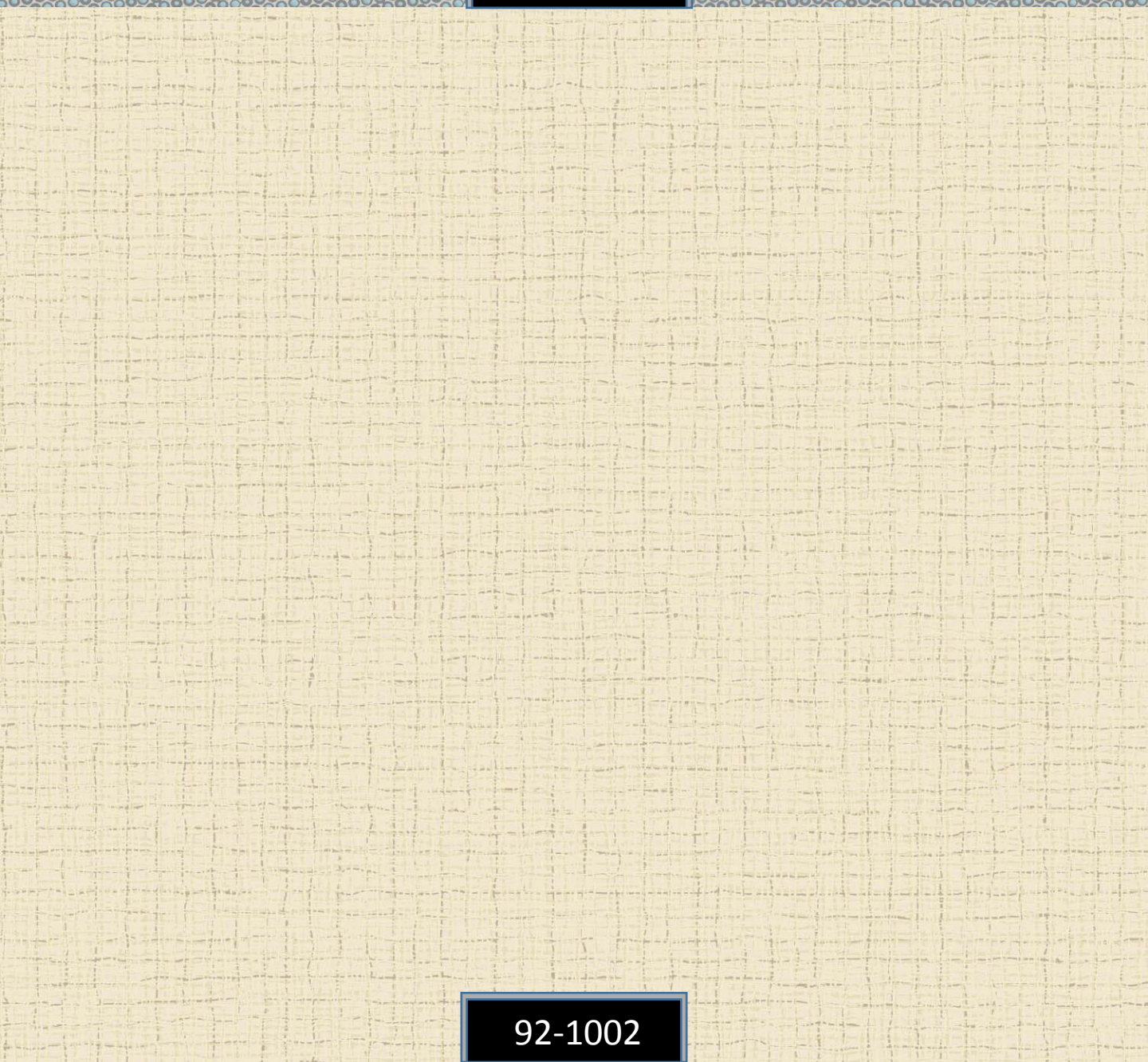
92-0903

92-0902

92-0905

A dense, repeating pattern of small blue circles on a slightly darker blue background, covering the top half of the page.

92-0906

A light yellow background with a faint, repeating grid pattern of thin, dark lines, covering the bottom half of the page.

92-1002

92-1006

92-1102



92-1603




Vertical ART



92-1706




Vertical ART

92-2005

92-2001

92-2002

92-2003

92-2004

92-2006

92-2007

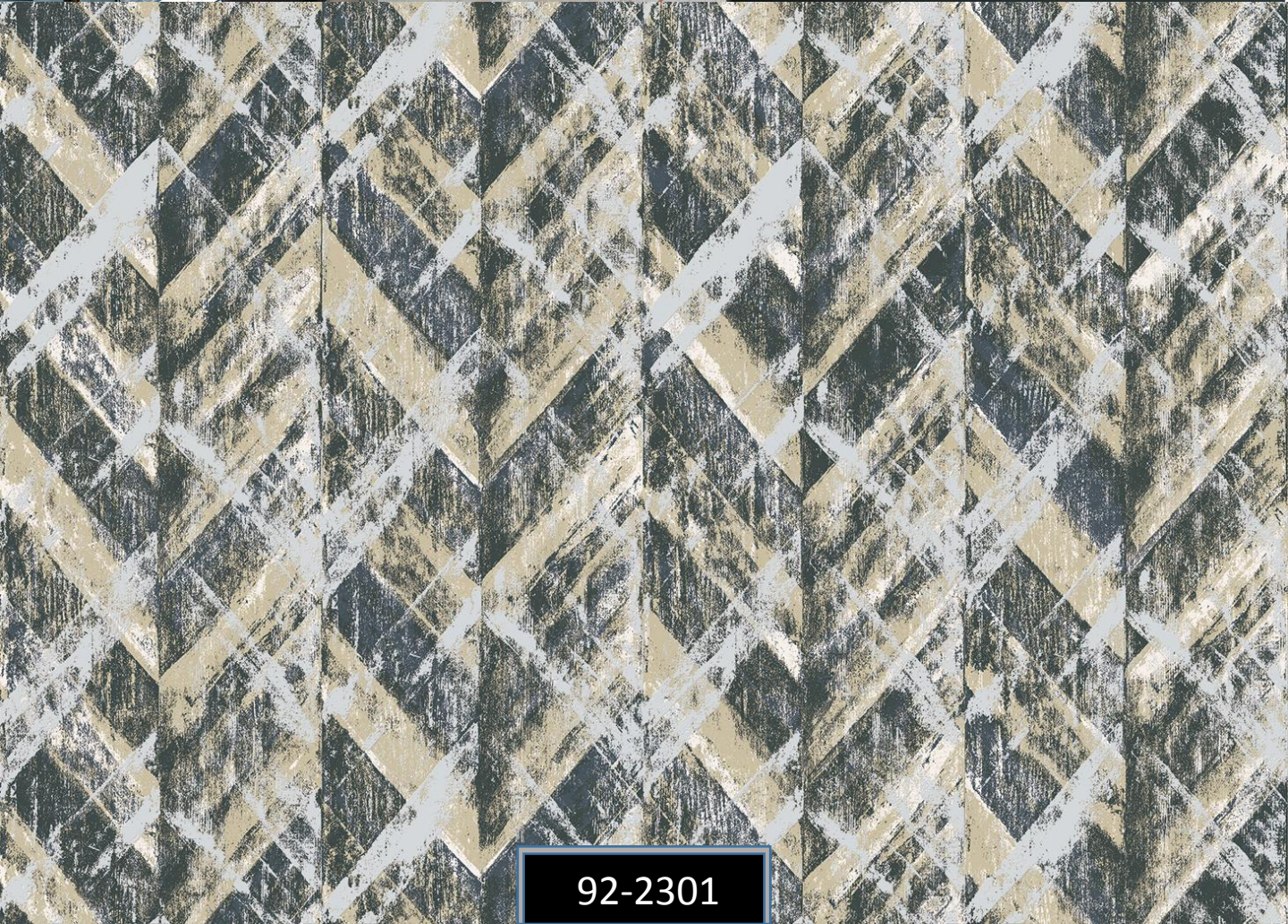
92-2008



92-2205



Vertical ART




92-2301



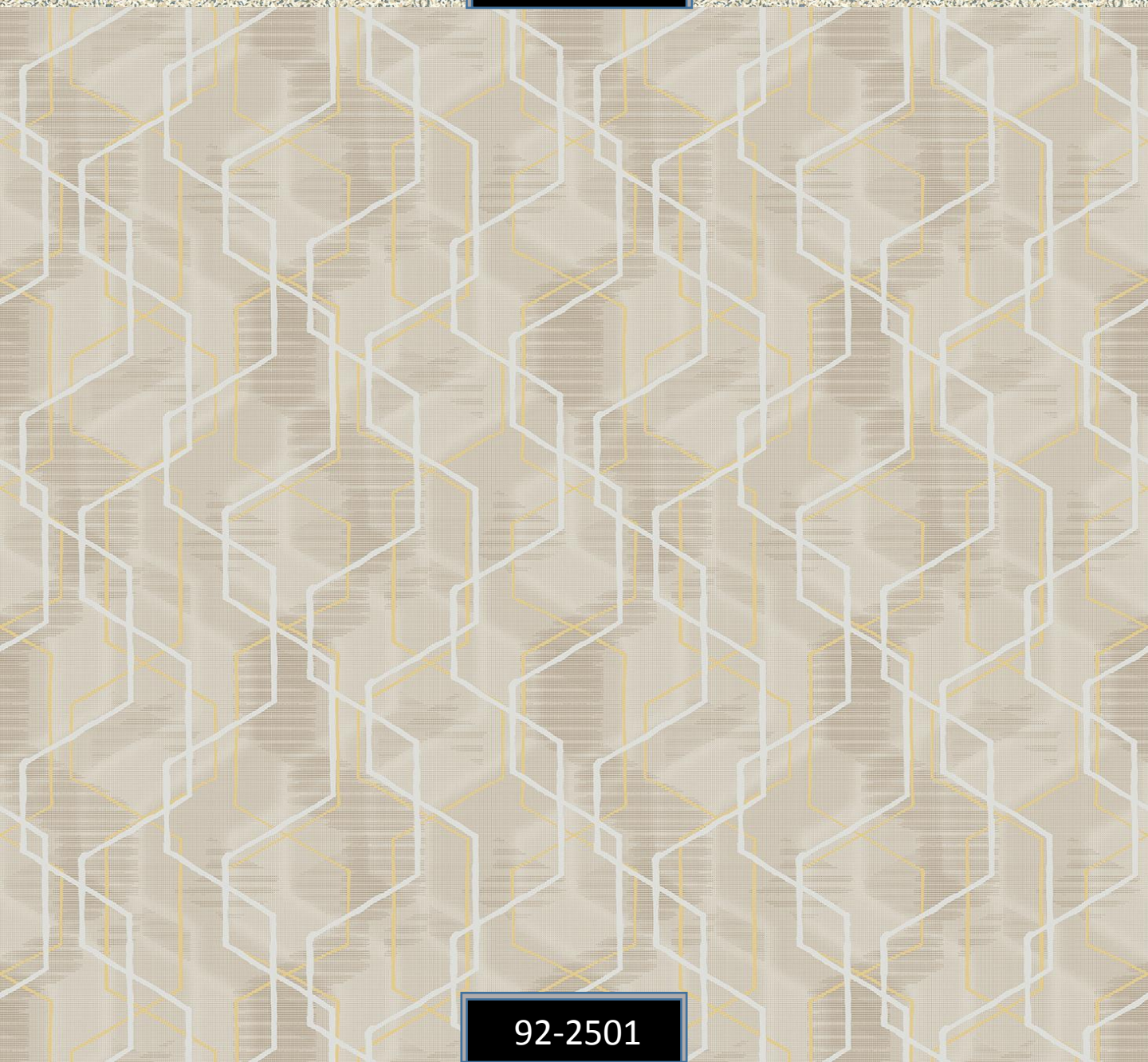
92-2303



92-2305



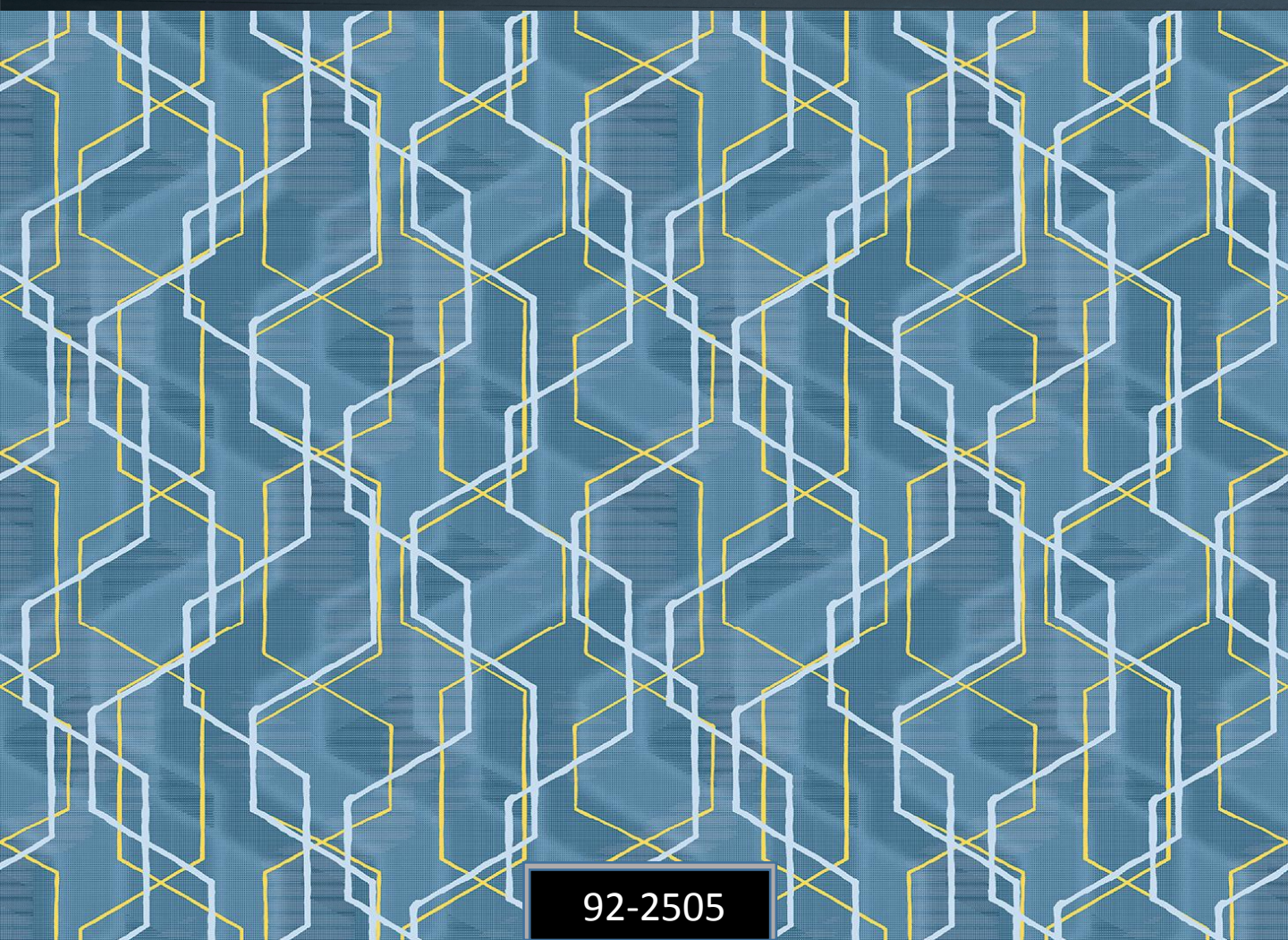
92-2403



92-2501



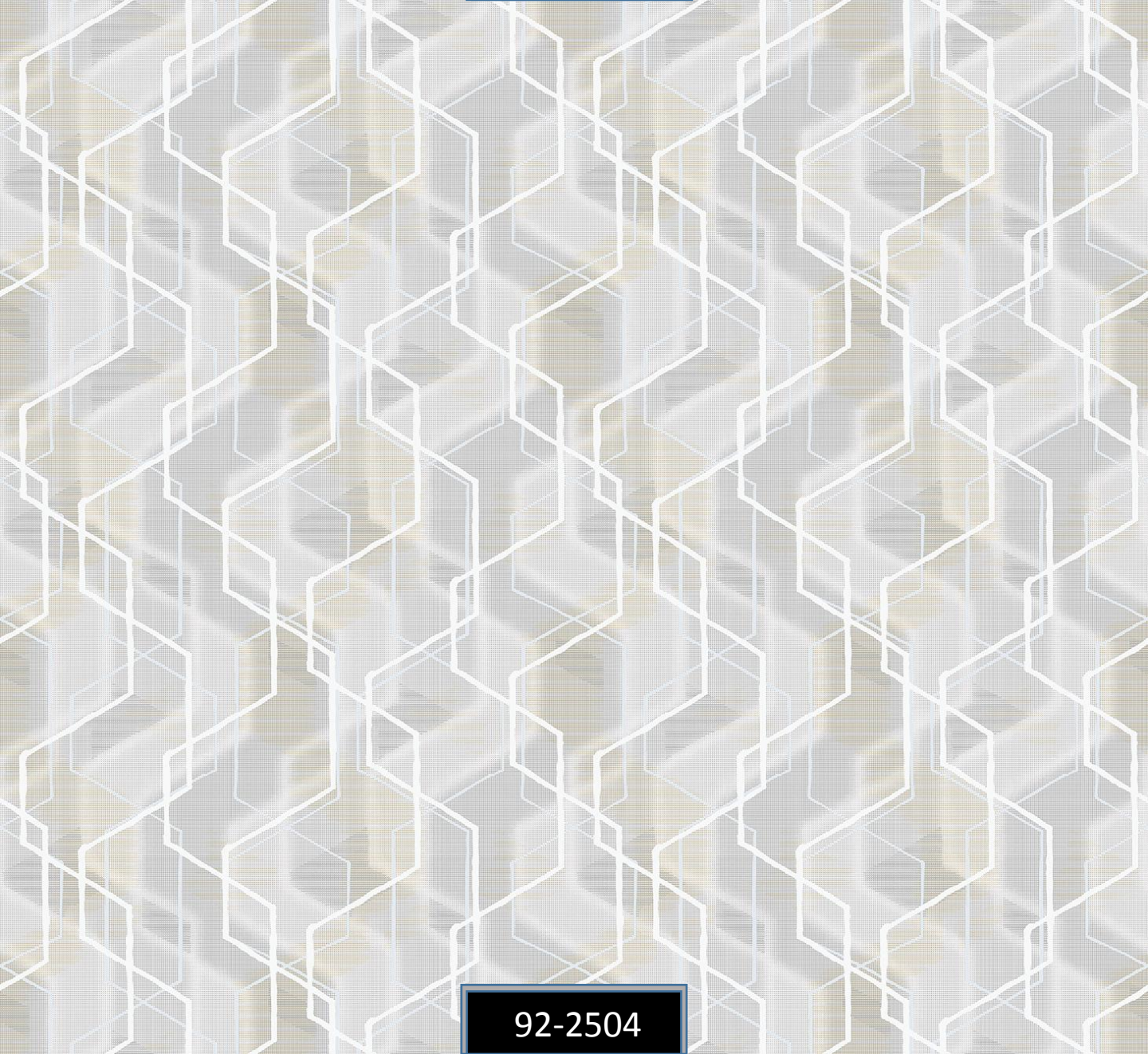
Vertical ART



92-2505



92-2502



92-2504



92-2601



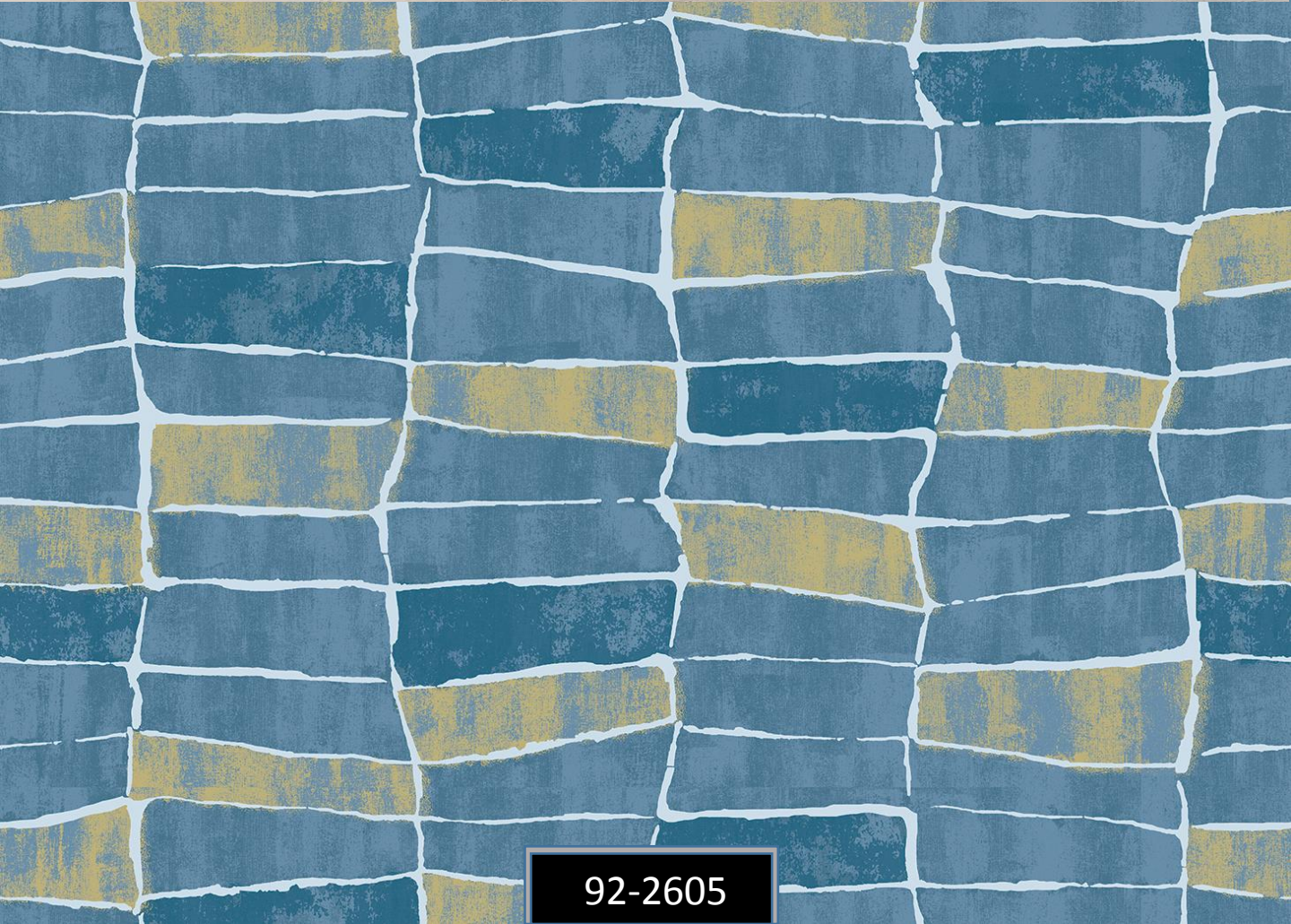
92-2602



92-2604




Vertical ART



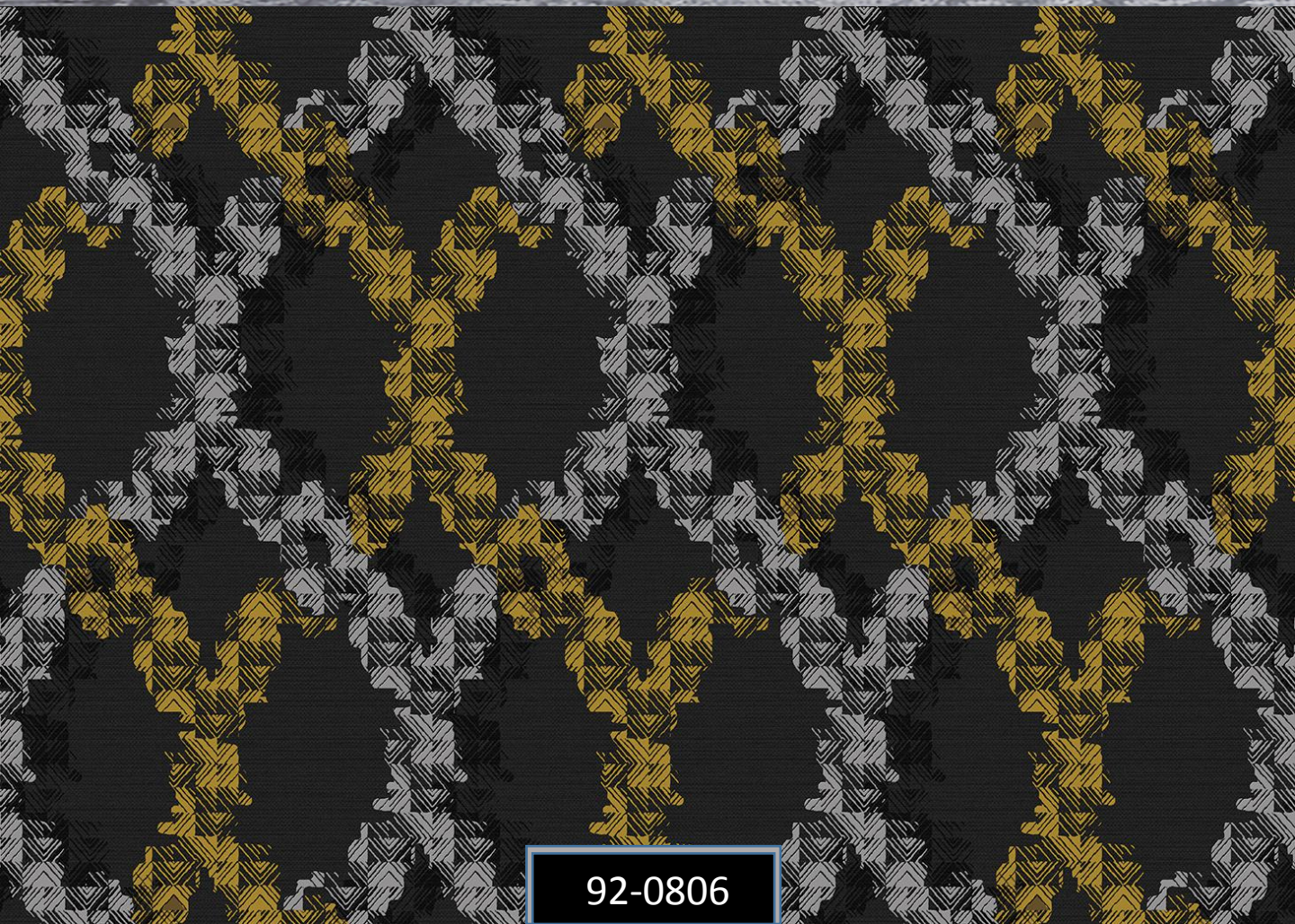
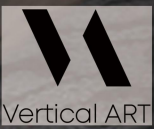
92-2605

92-2702


92-2704

92-2705

92-2701



92-0806



92-2802


92-2801



92-2804

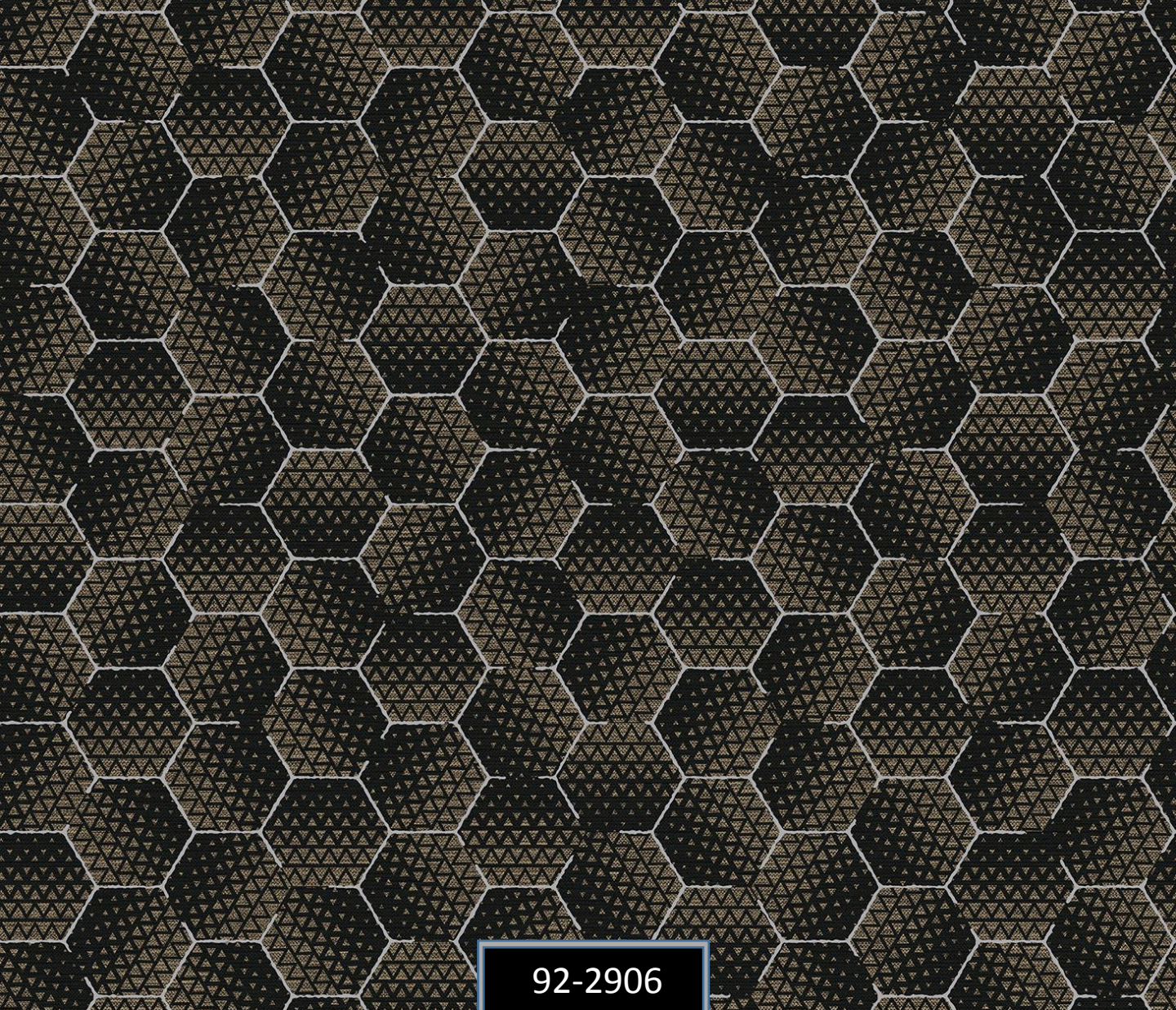


92-2901

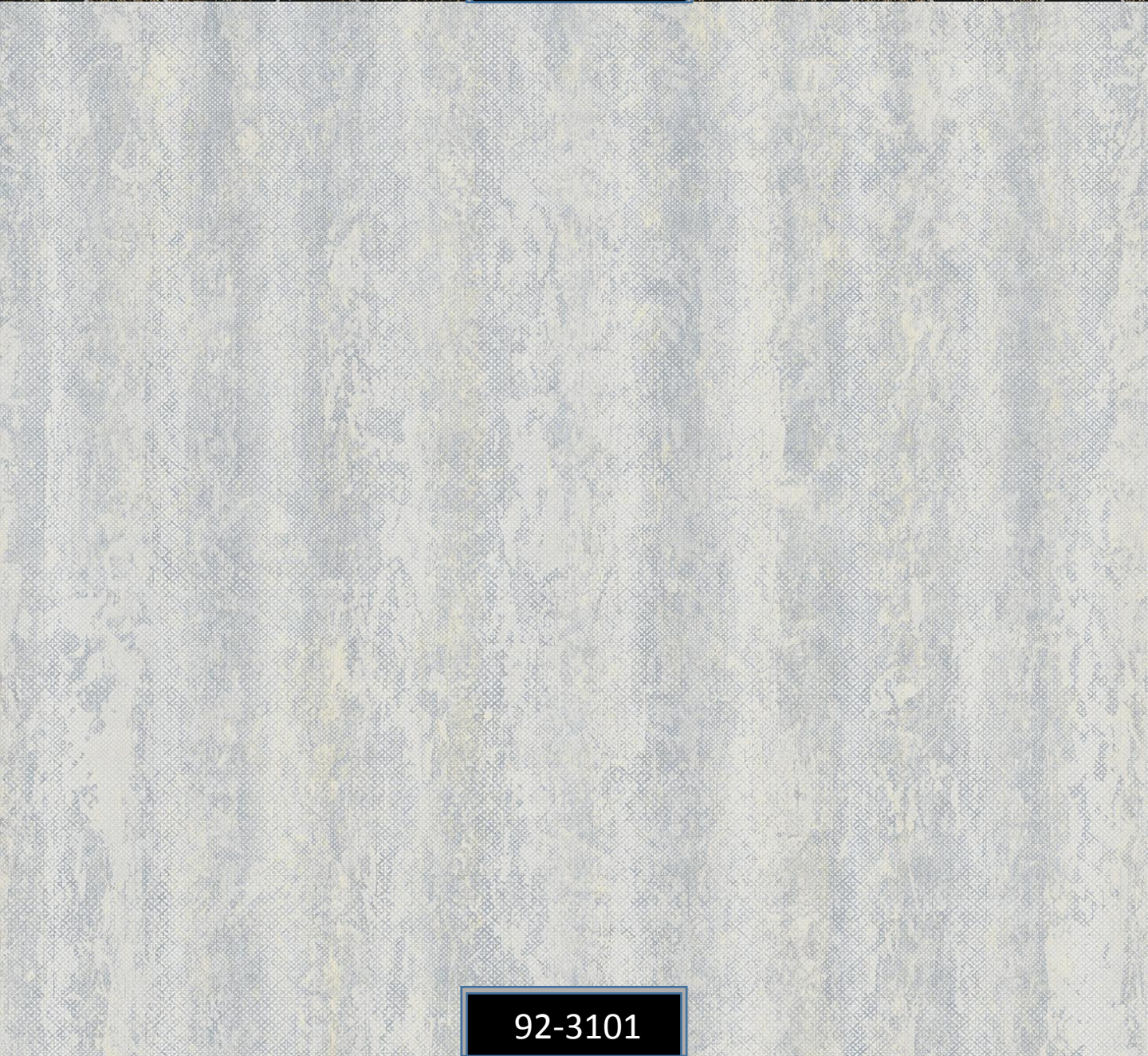


92-2902

92-2904



92-2906



92-3101

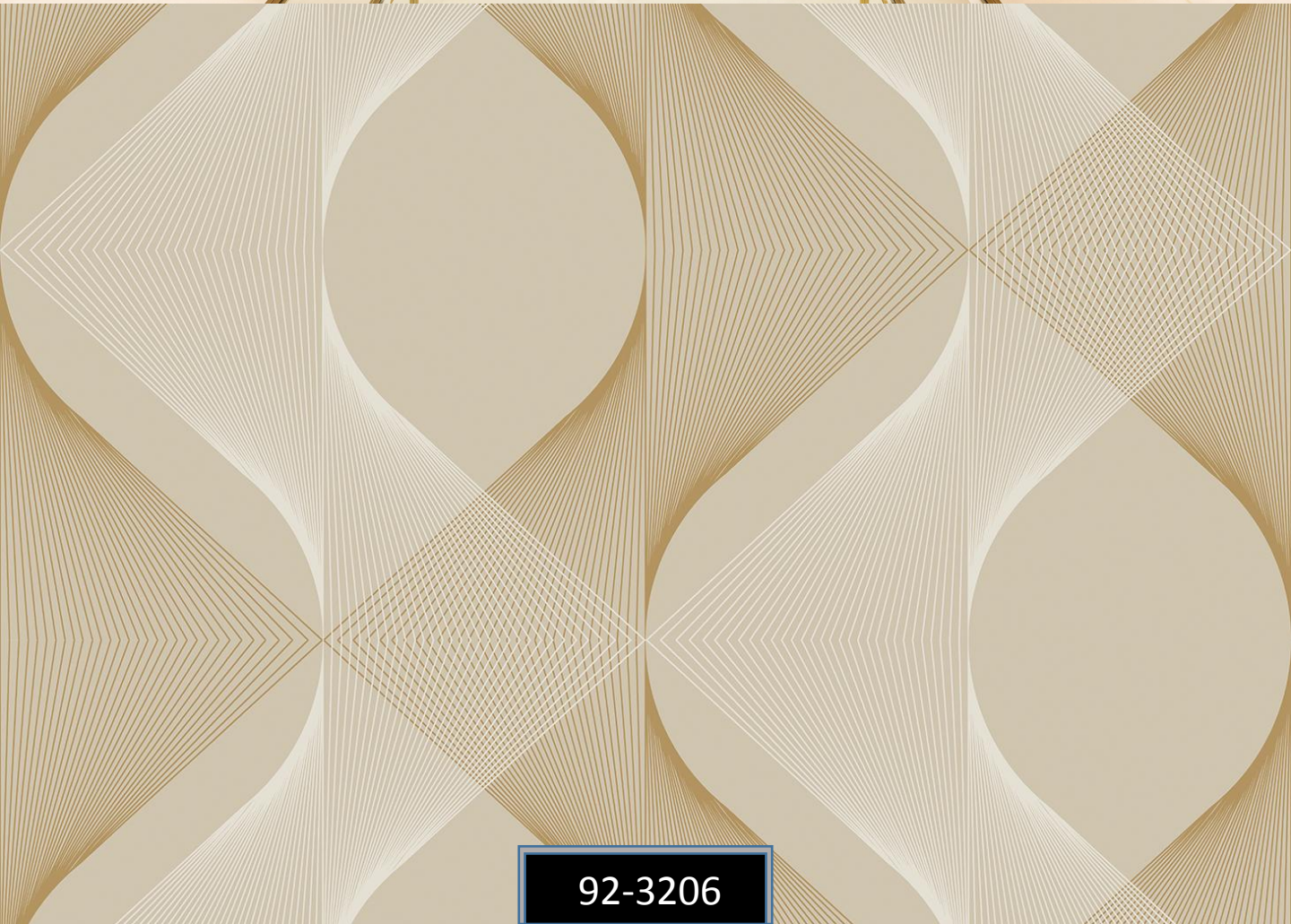
92-3102

92-3104

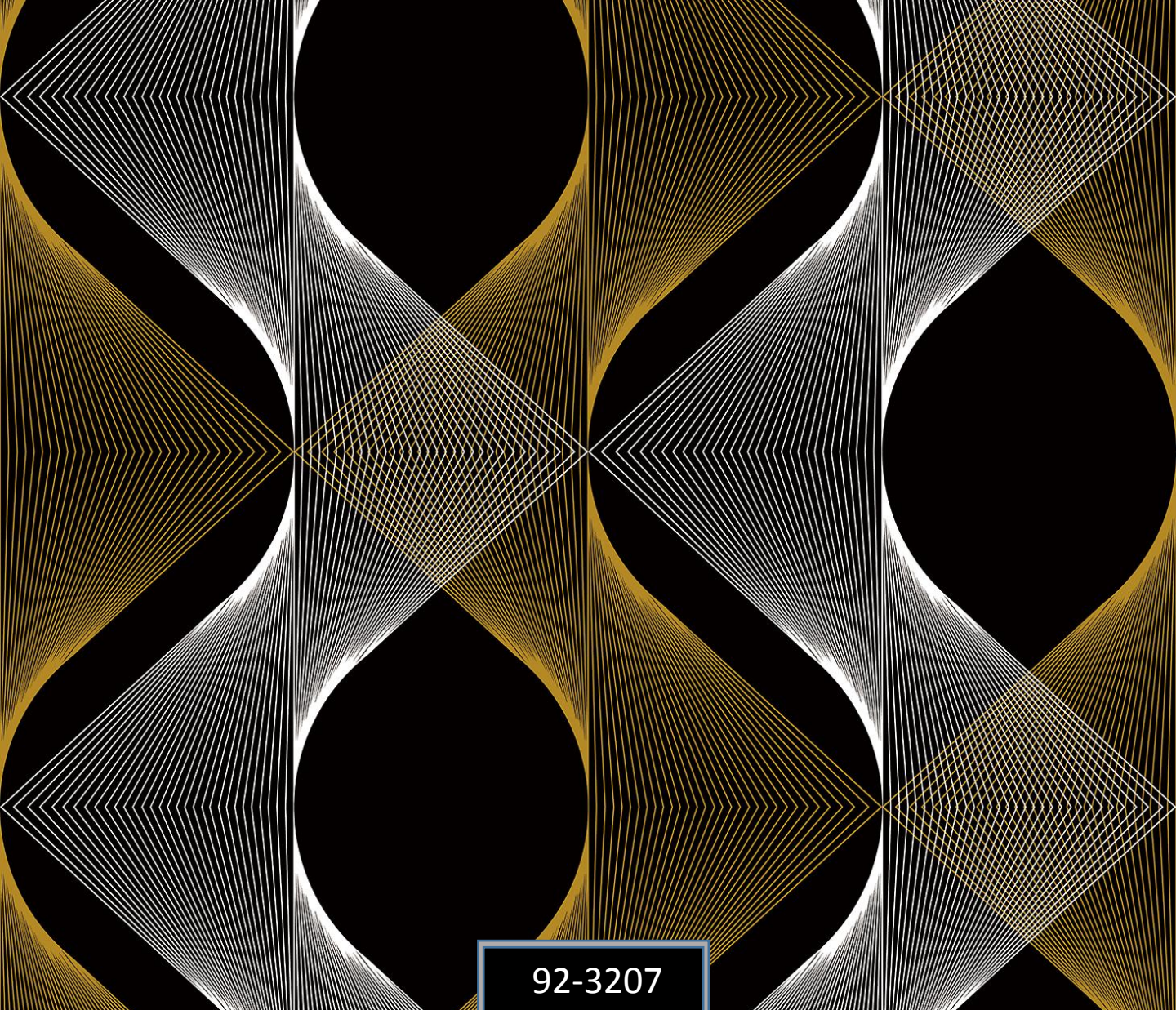
92-3106




Vertical ART



92-3206



92-3207



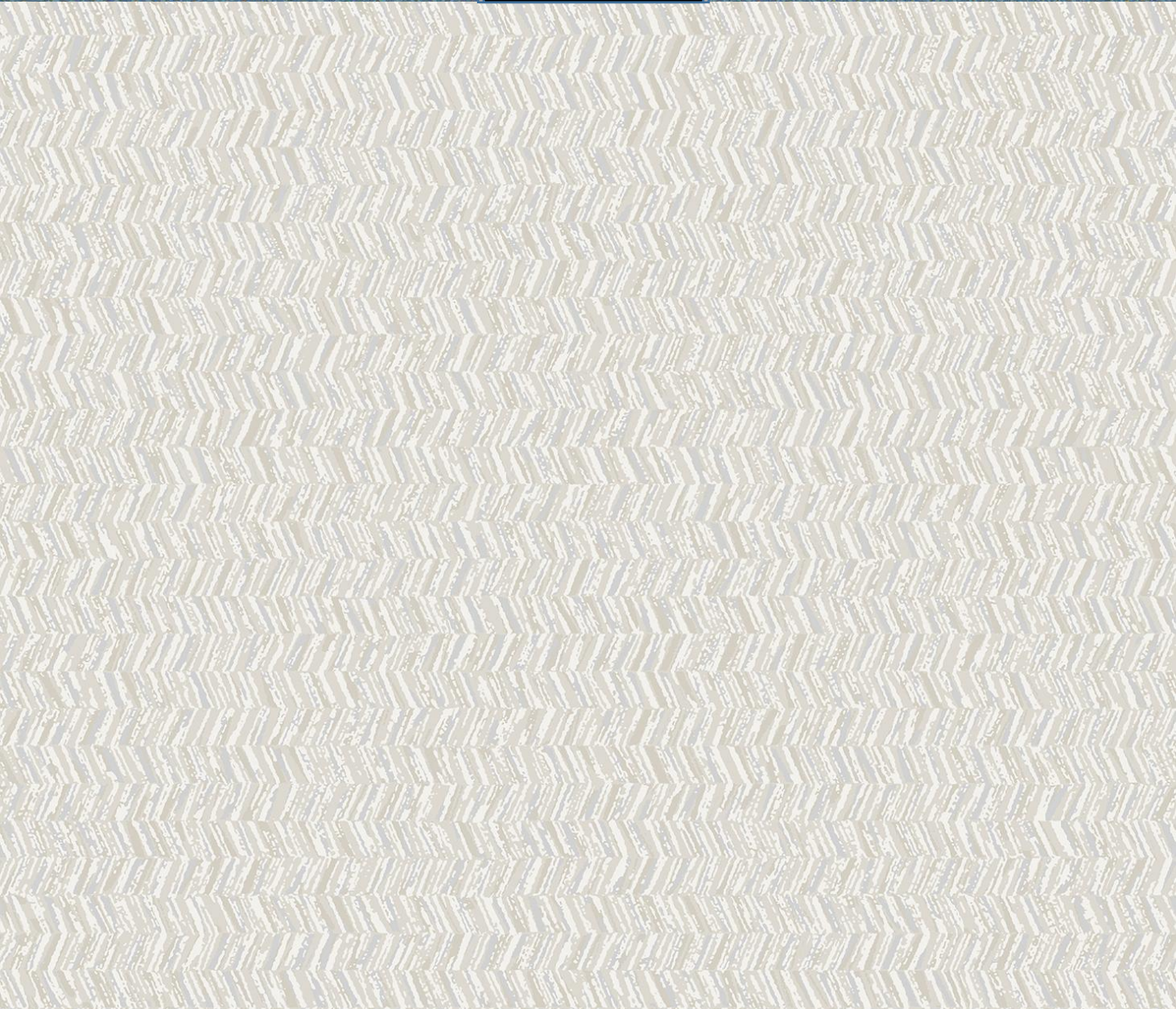
92-3303



92-3307



92-3304



92-3305



92-3306



92-3307

92-3403

92-3404

92-3405

92-3406

92-3407

Shine

Página	Modelo	Repetición	Patrón	Página	Modelo	Repetición	Patrón	Página	Modelo	Repetición	Patrón
01	92-0403	64CM	→ ←	28	92-2701	0CM	→ ○	55	92-2802	64CM	→ ←
02	92-0902	60CM	↗ ↘	29	92-3304	64CM	→ ←	56	92-2902	64CM	→ ←
03	92-0706	0CM	→ ○	30	92-3404	0CM	→ ○	57	92-3102	0CM	→ ○
04	84-0201	0CM	→ ○	31	92-0706	64CM	→ ←	58	92-3206	64CM	→ ←
05	92-2804	64CM	→ ←	32	92-2602	64CM	→ ←	59	92-2804	64CM	→ ←
06	92-2504	64CM	→ ←	33	92-2502	64CM	→ ←	60	92-3306	64CM	→ ←
07	92-0801	64CM	→ ←	34	92-0905	60CM	↗ ↘	61	92-3406	0CM	→ ○
08	92-2704	0CM	→ ○	35	92-2702	0CM	→ ○	62	92-3207	64CM	→ ←
09	92-0401	64CM	→ ←	36	92-1603	64CM	→ ←	63	92-2806	64CM	→ ←
10	92-3305	64CM	→ ←	37	92-0706	0CM	→ ○	64	92-3106	0CM	→ ○
11	92-3405	0CM	→ ○	38	92-2008	0CM	→ ●	65	92-2305	0CM	→ ○
12	92-0701	0CM	→ ○	39	92-0303	8CM	↗ ↘	66	92-2205	64CM	→ ←
13	92-2605	64CM	→ ←	40	92-3303	64CM	→ ←	67	92-2303	0CM	→ ○
14	92-0706	0CM	→ ○	41	92-3403	0CM	→ ○	68	92-2906	64CM	→ ←
15	92-2505	64CM	→ ←	42	92-2904	64CM	→ ←	69	92-3307	64CM	→ ←
16	92-2705	0CM	→ ○	43	92-0805	64CM	→ ←	70	92-3407	0CM	→ ○
17	92-0405	64CM	→ ←	44	92-3104	0CM	→ ○	71	92-2301	0CM	→ ○
18	92-0906	60CM	↗ ↘	45	92-2801	64CM	→ ←	72	92-2403	0CM	→ ○
19	92-0803	64CM	→ ←	46	92-2901	64CM	→ ←	73	92-2003	0CM	→ ○
20	84-1006	64CM	→ ←	47	92-3101	0CM	→ ●	74	92-2007	0CM	→ ○
21	84-0506	0CM	→ ○	48	92-1706	64CM	→ ←	75	92-2006	0CM	→ ○
22	92-1006	0CM	→ ○	49	92-1102	0CM	→ ○	76	92-2005	0CM	→ ●
23	92-0402	64CM	→ ←	50	84-0503	0CM	→ ○	77	92-2004	0CM	→ ○
24	92-0903	60CM	↗ ↘	51	84-1001	64CM	→ ←	78	92-2001	0CM	→ ○
25	92-0702	0CM	→ ○	52	92-1002	0CM	→ ○	79	92-2002	0CM	→ ○
26	92-2601	64CM	→ ←	53	92-0201	64CM	→ ←				
27	92-2501	64CM	→ ←	54	92-0301	8CM	↗ ↘				

El contenido de este libro está sujeto al contenido de propiedad intelectual.

Rolls de Tapiz Tejido No Tejido (Non Woven) 0.53 x 10 m

Geen patroon
Raccord libre
Free match
Ansatzfrei
Sin case



Recht patroon
Raccord droit
Straight match
Gerader Ansatz
Cote recto



Verspringend patroon
Raccord saute
Blissetzmaich
Versetzter Ansatz
Raccord alterne



Zeer goed afwasbaar
Les-sobbe
Extra washable
Hooh waschbestandig
Muy bien lavable



Anrachable a sec
Strippable
Restos abiechbar
Para quitar el papel
arrancotele em seco

Wand insmeien
Encoller le mur
Paste the wall
Die Wand einkleistern
Encolar la pared



Geed lichtbestendig
Resistant a la lumiere
Sufficient light fastness
Gute Lichtbeständigkeit
Buena resistencia a la luz



Stortend plakka
Icrlisverser
Reverse plasterable lengths
Gesturzt kleben
invertir plajos



Vlamvertragend volgens de Franse M1 norm
Non feuéselon la norme M1 française
Fire retardant according to the French M1 standard
Flammbremmend nach der französischen M1 norm
Lgñifugo conforme al estándar M1 francés



Vertical ART

www.verticalart.com

Shine



Vertical ART